

Dual Color Injection Molding Machine

# DC-DS

## 260~660<sup>T</sup>

**OMC**

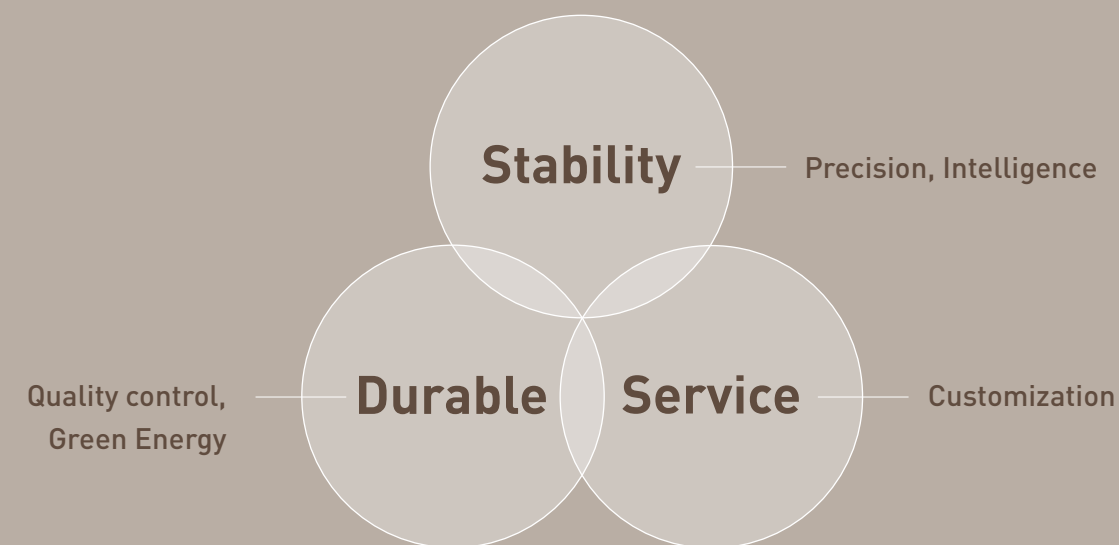
Outstanding Machinery Co., Ltd.

[www.  
omc-injection.  
com.tw](http://www.omc-injection.com.tw)



# OMC

## Advantage & Philosophy



### The word we like to challenge the most is "Impossible".

Facing with doubt, we have our motto: Speak Less, Do More. Do not express much opinion, but act first. When continuous practice gradually takes shape, give it meaning so that people can understand it.

### Creating the best customer experience.

Because clients from all over the world expect and look for perfect experience, OMC's products provide the precision to meet our promised performance. Constantly adjusting molding-parameter, unstable quality, and helpless maintenance and technical support, the above frustrating experience are what we hope you will not bump into it anymore. Creating the best customer experience is the core philosophy of our team.

### The broader the horizon, the bigger the thinking.

Recruiting talented thinkers and practitioners in all fields, we make continuous progress in products and practices. Learning from our colleagues equals learning from the best talents in the industry. Additionally, no matter to clients or to enterprises, our team listen with humility, learn and share sincerely. We are committed to make bilateral relationships well-established.



# OMC

## Product Principle

High environmental protection requirements.

The impact of production equipment on the environment is minimized.

Long operating life. After operating for many years, if repairs are required, machines can be repaired and then they can be operated for a long time.

High-standard business ethics.

Treat customers, employees and suppliers with respect.

Suppliers must meet OMC's required business ethics standards.

Treat customers and employees with fairness and justice.

High-standard products.

Product design and selection of raw materials are of the highest quality.

Leverage excellent experience and innovative technologies to design better products.

100% of product reliability OMC pursues.

Every product is verified after assembly.



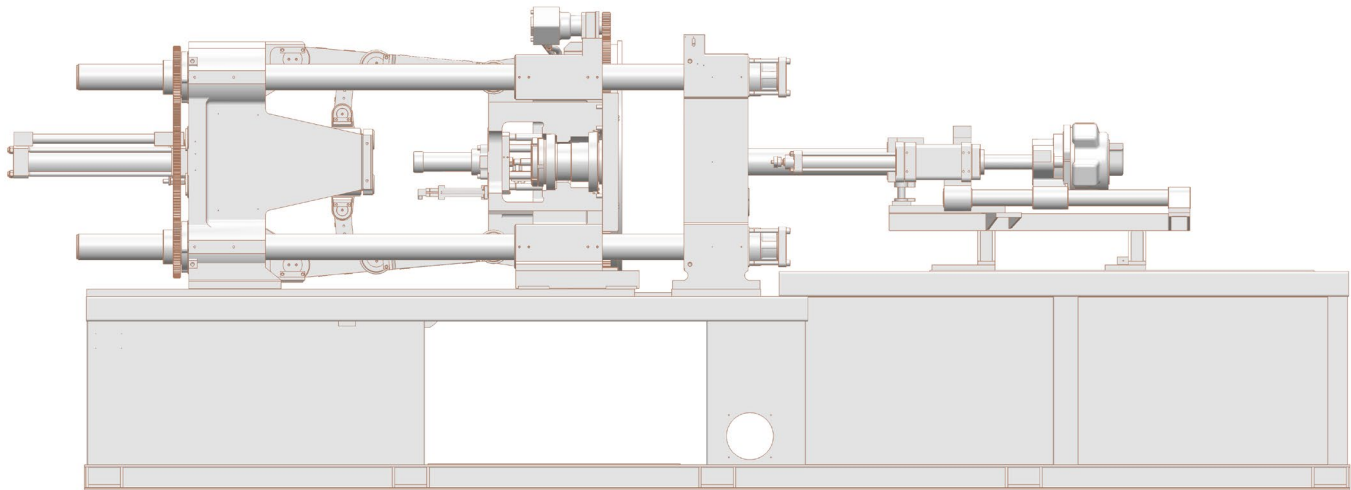
OMC

Mechanical Performance Characteristics

Servo motor system (Japanese Toshiba and other optional brand) and made-in-Germany Rexroth/Bosch semi-close-loop system.
Injection pressure and speed monitoring function. (Screw pressure)
Display of pressure unit and speed unit is friendly to switch based on your usage habit. (Bars or Kg/cm <sup>2</sup> , % or Mm/s)
Temperature of electrical heating-band is controlled by PID intelligent system.
Multilingual choices: Chinese, English, German, Spanish, Vietnamese, Thai. Function keys, F1~F8 switch languages friendly and directly.
Industry 4.0 communication. High-performance computer control system and its extremely quick response: 0.2~0.3ms. (Microsecond)
Central monitoring function. (Excluding the expense of cables, computers and software of your factory)
Communication agreement Ethernet (OPC UA), EtherCAT: <ul style="list-style-type: none"><li>Alarm notices of servo-driver display on the controller for friendly reading and convenient communication.</li><li>Integrated auxiliary equipment such as robot-arm, mold temperature controller, hopper, and servo-driver save your resetting time.</li></ul>
DI/ DO/ AO mandatory signal output and our signal-switch function are friendly and convenient for maintenance staff.
Enhance the effect of ground wire of servo-driver to avoid signal interference.
Have proper distance between Alternating Current and Direct Current to avoid signal interference.
Instruction, maintenance manual, spare parts manual, electrical circuit diagram, and hydraulic circuit diagram.
Technical document of adjusting parameters among servo-driver, solenoid valves and controller.
~~~~~
Ejector return signal for protecting your mold.
Linear transducers on injection, clamping and ejectors.
Japanese LUBE automatic lubrication.
Connect hydraulic circuit with cooler to maintain low oil-temperature.
~~~~~
Comprehensive adoption of nodular cast iron FCD-600 (D5506 in U.S., GGG60 in Germany) and high-strength alloy steel SCM-440 (4140 in U.S., 42CrMo4(1.7225) in Germany).
Mastering screw experience for 40 years, we adopt extra anti-wear and anti-corrosion stainless steel: SACM-1 (SACM-645 in Japan, SAE 7140 in U.S., 41CrAlMo7 (1.8550) in Germany) and Japanese Hitachi DAC SKD-61 (H13 in U.S., X40CrMoV51 (1.2344) in Germany).
Injection-carriage adopt two hydraulic cylinders for much balanced movement, avoiding the nozzle from friction damage while attaching to the mold.
Movable platen is coupled with Japanese anti-friction roller bearings. (Optional adoption: brass blocks or linear slide)
The parallelism of our movable and fixed platens is required with 0.05mm.
CE quality and safety certification (ISO TUV)
Mechanical high-precision machining requirements
Nitriding Heat Treatment
High Frequency Induction Hardening
Eletroplating
~~~~~
Coupled with hydraulic logic valves, Rexroth/Bosch proportional valve of decompression (back pressure) provides precise hydraulic movement.
The changeover position to holding pressure is precisely controlled to guarantee you reliable parts quality.
Integrated with experienced hydraulic and electrical circuit design, our signature injection structure ensures the highest repeatability, enhancing the accuracy within 0.01mm.
Unique hydraulic circuit design lowers the intense friction as the motor pump reverses suddenly, enhancing its operating life.
This delicate integration technology of hydraulic and electrical circuit holds the instantaneous acceleration of hydraulic cylinder.
100% hand-made hydraulic steel pipe.
Japanese high-pressure steel-wired hose.

Dual Color Injection Molding Machine

DC-DS 260~660 ton

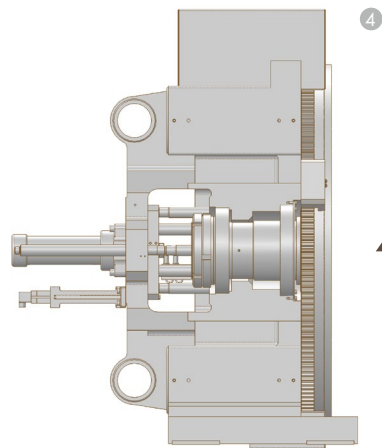
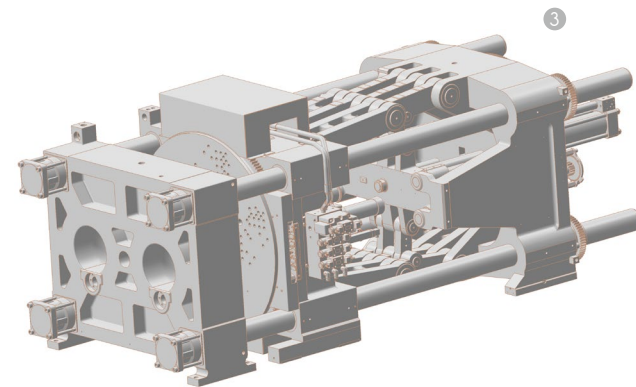


# Features

**1** Equipped with high-precision photoelectric sensors and our signature hydraulic deceleration design which adopts bidirectional proportional control, the rotary table moves fluently and precisely.

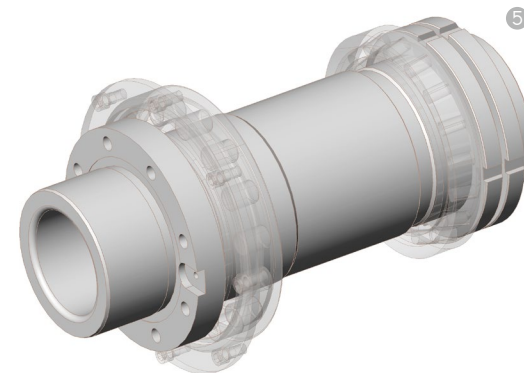
**2** Identical as servo electrical motor, our hydraulic motor provides you the quick response and extremely nice movement, adopting Bosch/ Rexroth proportional direction valve and flow valve control system.

**3** Lengthen the mechanical structure of the sliding sections on our movable platens to bear the overall weight of the molds and rotary table, keeping extremely nice parallelism.



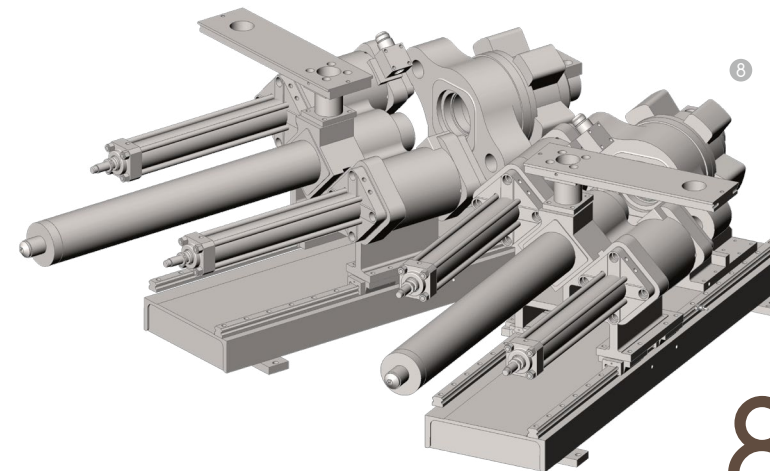
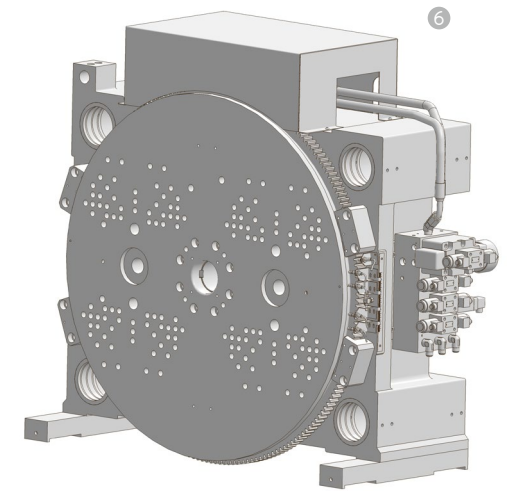
**4** The central axle of rotary tale is coupled with two Japanese bearings which guarantees the best tolerance, solidness, quality and durability.

**5** For the central axle of rotary table, we lengthen the depth and widen the diameter. You have much reliable structure, more durability and less maintenance.



**6** Apply brass blocks on each side of rotary table for restricting the parallelism within 0.05mm.

**7** To protect your molds, we carefully assemble two dead points for rotary tables and then provide an additional hydraulic cylinder for positioning.



**8** To shorten the pitch and the distance of two injection units, we develop this latest vertical two-cylinder structure for injection units.

**9** Regard our two-color injection molding machine as two individual and separate machines to enhance your capacity utilization.

**10** For more reliable and durable operation, we widen the toggle units and strengthen its structure. So when two molds are clamped, the clamping force and mechanical pressure is released evenly and averagely on the two molds, ensuring the long-term durability of the toggle units.  
| Ten years more durable for our clients |



No.136, Shezi Rd., Shezi Vil., Xinwu  
Dist., Taoyuan City 327, Taiwan  
T(03)4773691 | F(03)4773065  
[sales@omc-injection.com.tw](mailto:sales@omc-injection.com.tw)  
[www.omc-injection.com.tw](http://www.omc-injection.com.tw)